



Excavator | Loader | Mini Excavator

# BUCKETS

[www.galenbuckets.com](http://www.galenbuckets.com)



**Excavator Buckets**

Excavation Excellence



**Other Type Buckets**

Trench Titan

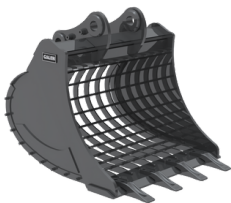


**Loader Buckets**

Burden Bearer



**Mini Excavator Bucket**



# Excavator Buckets

Designed for general purpose work. It is used in excavation works of less stony, clayey soft soils that are not highly abrasive. The blade is flat type and is Hardox® material.



## General Purpose Bucket



General purpose buckets are designed for normal digging conditions including light shale and rock.

## Rock Bucket

Rock buckets are built with extra thick materials in all wear areas and are designed for severe rock and shale applications where extra impact and abrasion resistance is required.



# Excavator Buckets

## Heavy Duty Bucket



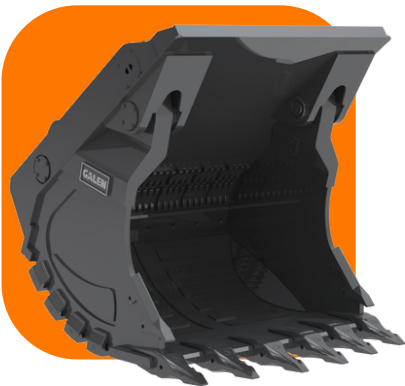
Heavy Duty Buckets are specifically designed for moderate to severe rock and shale applications where extra impact and abrasion resistance is required.

## Armored Heavy Duty Bucket

Armored Heavy Duty Buckets have extra wear protections according to Heavy Duty Buckets.



## Shovel Bucket



Shovel buckets are critical components in mining operations, are specifically designed to handle the rigorous demands of extracting minerals and ores from the earth. They are heavily guarded buckets designed for high density ( $>2.2 \text{ t/m}^3$ ) and abrasion of iron ore.



# Excavator Buckets

## Mining Bucket



From high-production lightweight mining buckets to any heavy-duty armoured mining bucket, each mining bucket is custom-engineered to suit your specific application.

Trapezoid Buckets create trench profile with narrow floor and safe side slope angle.

## Trapezoid Bucket



## Skeleton Bucket



Skeleton Buckets are designed for the sorting, sifting and filtering of materials.



# Excavator Buckets

## Grading Bucket



Grading buckets are designed for ditch maintenance, grading, slope work and construction jobs.

## Tilt Bucket

Tilt buckets offer up to 45 degrees of slope to the left or right, allowing you to move more earth with every cut you make. They are the perfect tool for ditching and grading, light material loading or handling, land clearing, waste handling and slope finishing.



## Cliff Bucket



The elongated profile of this bucket is specifically designed for handling and loading large rocks and blocks.

# Excavator Buckets

## Ripper Bucket



Ripper Buckets are designed for extraction work in the quarry, on hard and compact soil, allows you to move blocks and handle them once separated from the rocky surface. The profile of the structure helps to deal with the most resistant and abrasive materials, concentrating the force of penetration on the tooth tip.

Clamshell Buckets are used to handle load and unload industrial wastes, grains, sands, rocks and so forth in addition to digging and dredging activities.

## Clamshell Bucket



## Vibro Slope Bucket



Vibro Slope Bucket is designed for applications such as excavation, surface smoothing particularly on roadside slopes. It is equipped with hydraulic cylinders which are able to turn 45° right. and left.

# Excavator Buckets

## Shaft Screener Bucket



Screening buckets are the screening, crushing and mixing of soil, peat, shell and biomaterials, padding/trench filling, and screening/grinding of materials in industrial processes.

## Gripper Bucket

Gripper buckets are the multifunctional and versatile equipment, suitable for loading and handling of different types of material such as timber, twigs, waste and construction scrap.



## Crusher Bucket



Crusher buckets are designed crush any type of inert material, transforming it into ready-to-use material directly on site. Highly versatile and high-performance, it meets all crushing needs, in small and medium-sized construction sites, quarries and landfills.



# Excavator Buckets

## Trapeze Tilt Bucket



Trapeze tilt bucket is a type of excavator bucket attachment that is designed to provide increased versatility and flexibility in excavation and material handling tasks. It is named for its trapeze-like shape and its ability to tilt and rotate in multiple directions.

Banana Buckets are designed for digging trenches that are narrower than the width of the hinge group, but deeper than a normal bucket. It generates more breakout force, digs deeper and reduces time and fuel costs.

## Banana Bucket



# Excavator Buckets



Edge Length 1400mm

Capacity 1.25m<sup>3</sup>

Hidromek HMK230  
General Purpose Bucket



Edge Length 1550mm

Capacity 1.6m<sup>3</sup>

Volvo EC300 Rock  
Bucket



Edge Length 1410mm

Capacity 1.5m<sup>3</sup>

Hidromek HMK310  
Rock Bucket



Edge Length 2520mm

Capacity 3.5m<sup>3</sup>

Mantsinen 60  
Clamshell Bucket



Edge Length 2050mm

Capacity 5m<sup>3</sup>

Hitachi EX1200 Rock  
Bucket



Edge Length 200mm

Cat305 Banana Bucket



# Excavator Buckets



Edge Length 1650mm

Capacity 2.4m<sup>3</sup>

CAT336 Rock Bucket



Edge Length 3000mm

Capacity 12m<sup>3</sup>

Terex RH40 Shovel Bucket



Edge Length 1300mm

Capacity 2.5m<sup>3</sup>

Mining Bucket



Edge Length 1800mm

Capacity 3m<sup>3</sup>

Volvo EC380 General Purpose Bucket



Edge Length 925mm

Capacity 2.45m<sup>3</sup>

Komatsu PC300 Trapezoid Bucket



Edge Length 1500mm

CAT345C Cliff Bucket



Edge Length 1550mm

Capacity 1.9m<sup>3</sup>

Komatsu PC350 Rock Bucket



Edge Length 1850mm

Capacity 2.20m<sup>3</sup>

Hitachi ZX350 Skeleton Bucket



Edge Length 1200mm

Capacity 0.20m<sup>3</sup>

CAT305 Tilt Bucket



Edge Length 450mm

Capacity 0.30m<sup>3</sup>

Doosan DX225 Channel Bucket



Capacity 0.25m<sup>3</sup>

Hidromek HMK220 Trapezoid Bucket



Edge Length 1200mm

Komatsu PC220 Marble Bucket



# Loader Buckets

Loaders can meet and exceed the requirements of any job when equipped with the right bucket.



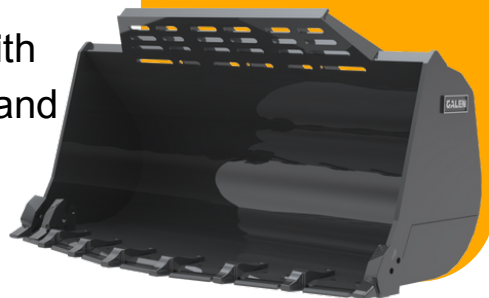
## General Purpose Bucket



Loader general purpose bucket is a versatile attachment designed for use with loaders, such as skid steers, wheel loaders, and backhoes. It is used for a wide range of general purpose applications, such as grading, digging, backfilling, and loading.

## Rock Bucket

Loader rock bucket is a type of heavy-duty bucket that is specifically designed for use with loaders, such as skid steers, wheel loaders, and backhoes. It is primarily used for digging and transporting large rocks, boulders, and other heavy materials.



# Loader Buckets

## Light Material Bucket



Light material bucket is a type of container that is typically used for carrying and transporting materials such as soil, gravel, sand, or other lightweight materials. These buckets are typically made from lightweight materials such as aluminum, plastic, or composite materials, which makes them easier to handle and transport.

## High Dump Bucket

High dump bucket is a type of bucket attachment designed for loading and dumping materials into high-sided trucks, hoppers, or other containers. It is designed with a high-lift frame and a hydraulic cylinder that allows the bucket to lift higher than a standard bucket attachment.



## 4-in-1 Bucket



4-in-1 bucket is a type of bucket used in various industries, including construction, agriculture, and landscaping. It is designed to perform four functions, which include digging, grappling, dozing, and leveling.

# Loader Buckets

## Side Dump Bucket



Side dump bucket is a type of bucket used for material handling and transport, typically in the construction and mining industries. As the name suggests, a side dump bucket is designed to dump material to the side rather than the front, allowing for more precise placement of the material.

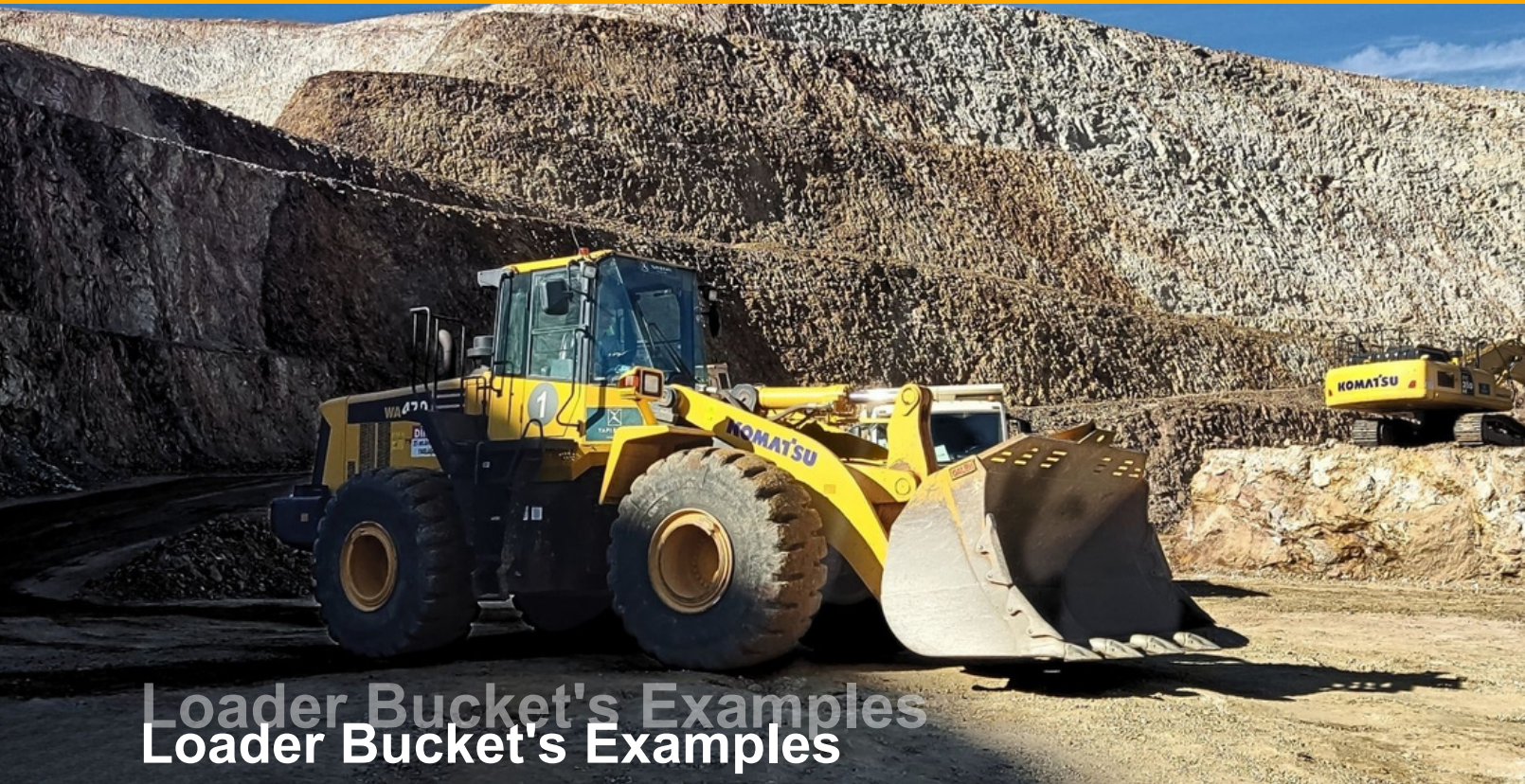
A push blade bucket is a specialized attachment for underground mining applications. It is designed for pushing and leveling tasks. The blade is typically made of durable steel and can be adjusted using hydraulic cylinders. This allows the operator to angle the blade left or right, or tilt it up or down, to move and level materials in the desired direction.

## Push Blade Bucket





# Loader Buckets



## Loader Bucket's Examples



Edge Length 2700mm

Capacity 4m<sup>3</sup>

CAT924  
High Dump Bucket



Edge Length 3250mm

Capacity 4.5m<sup>3</sup>

Komatsu WA470 Loader  
Bucket



Edge Length 2900mm

Capacity 3m<sup>3</sup>

CAT950GC Rock Bucket



Edge Length 3280mm

Capacity 5.2m<sup>3</sup>

Volvo L150H Rock Bucket



Edge Length 3000mm

Capacity 6m<sup>3</sup>

CAT950 Light Material  
Bucket



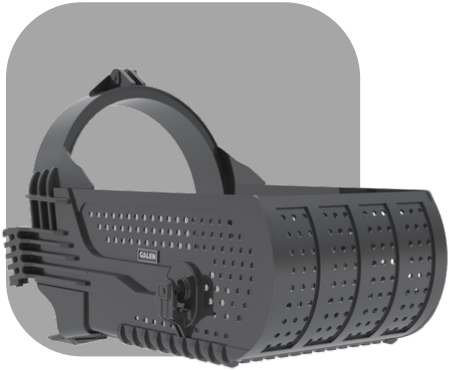
Edge Length 2500mm

Capacity 3m<sup>3</sup>

JCB 427 Grapple Bucket

## Other Type Buckets

### Shaft Screener Bucket



Dragline bucket is a large excavation tool used in mining and construction. It is a specialized bucket that is attached to a dragline, which is a type of heavy equipment used for excavating large quantities of earth and rocks.

### Stacker & Reclaimer Bucket

Stacker&Reclaimer Bucket, also known as a reclamation bucket, is a type of bucket used in industries such as mining, construction, and waste management. It is designed to reclaim or recover materials from stockpiles or waste materials.



### Chain Bucket



Chain bucket is a type of excavating equipment that is used to lift and transport materials in bulk. It consists of a series of interconnected buckets or containers, which are attached to a continuous chain. As the chain moves, the buckets scoop up material from the ground and carry it along a predetermined path, where it can be deposited at a desired location.



## Other Type Buckets



Other Type Examples  
Other Type Examples



Dragline Bucket



Reclaimer Bucket



Chain Bucket



Reclaimer Bucket



Chain Bucket



Dragline Bucket



# Mini Excavator Buckets

## Mini Digging Bucket



The standard digging (backhoe bucket) is a versatile attachment part offering a multiplicity of applications. It can be ideally used for picking up, transporting, lifting or draining. For construction machinery with an operating weight of 0.8 up to 11 tons.

## Mini Ditch Cleaning Bucket

The ditch-cleaning bucket is perfectly employed in constructing trenches and hollows, creating slopes and banks, grading and ditch-cleanings as well as for the creating complex terrains. For construction machinery with an operating weight of 0.8 to 11 tons.



## Mini Tilt Bucket



The cylinder equipped ditch-cleaning bucket is ideal for simple to medium-heavy tasks, particularly in earth and light soils. It is perfect for creating complex terrains and requires minimal long-term maintenance. For construction machinery with an operating weight of 0.8 to 11 tons.

# Mini Excavator Buckets

## Mini Sorting Bucket



The sorting (demolition) bucket is mainly employed for sieving rocks and cobblestone as well as recycling of building rubble. For construction machinery with an operating weight of 0.8 to 11 tons.

The ripper attachment is suited for loosening and detaching hardest stones. Additionally, in gardening and landscaping, the ripper attachment has succeeded in loosening roots, too. For construction machinery with an operating weight of 0.8 to 11 tons.

## Mini Ripper Attachment





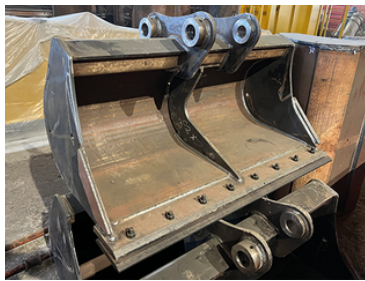
## Other Type Buckets



Mini Excavator Bucket's Examples  
Mini Excavator Bucket's Examples



Mini Tilt Bucket



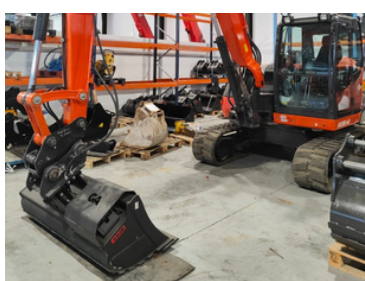
Mini Ditch Cleaning



Mini Digging Bucket



Mini Sorting Bucket



Mini Tilt Bucket



Mini Ditch Cleaning